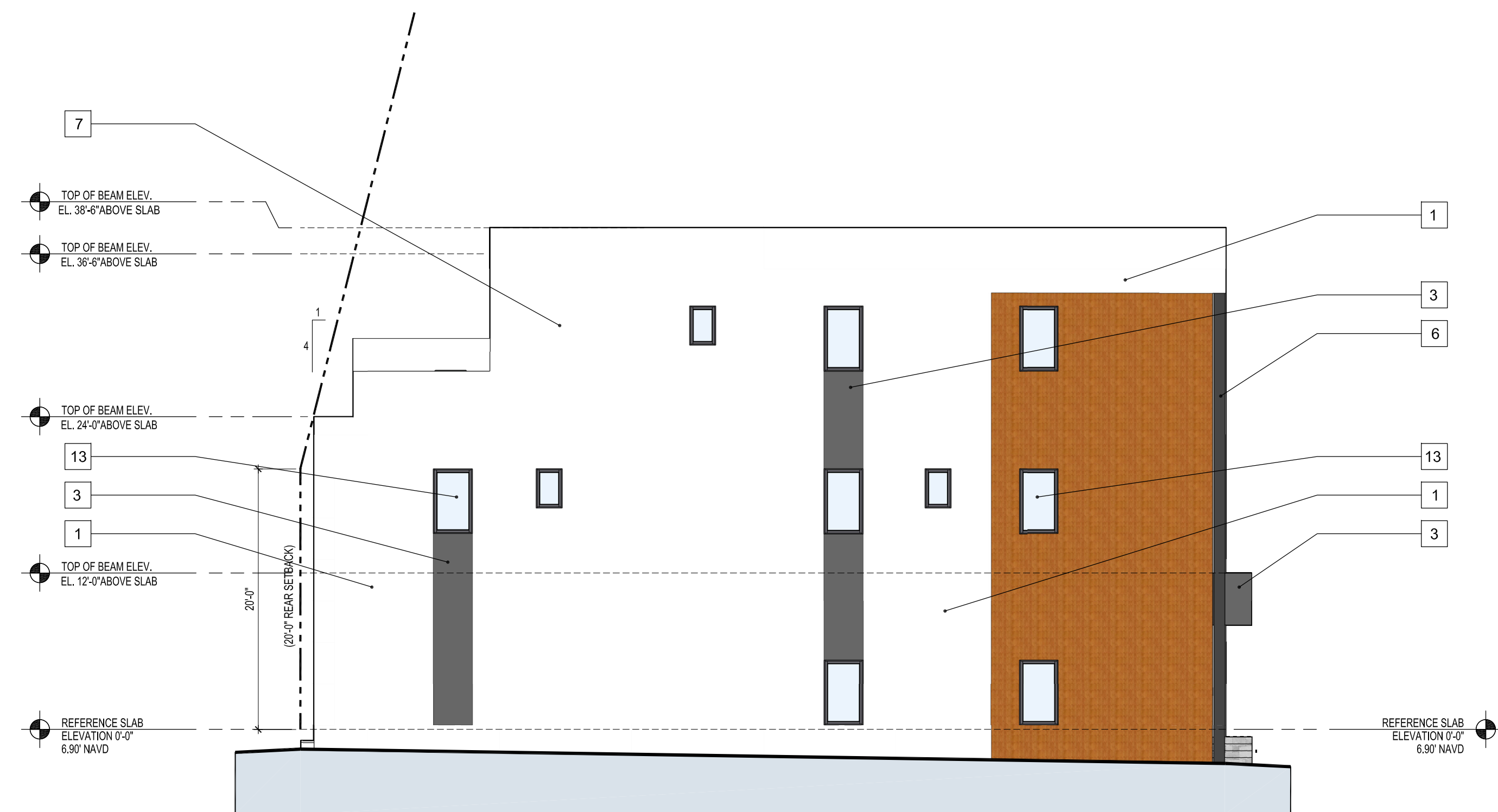


LEFT SIDE (WEST) ELEVATION



# REAR (NORTH) ELEVATION

SCALE: 1/8" = 1'-0"

ELEVATION LEGEND	
1	SMOOTH CEMENTITIOUS FINISH (COLOR: WHITE OVER CMU WALL (TYP.))
2	TEXTURED CEMENTITIOUS FINISH (COLOR: LIGHT GRAY) OVER CMU WALL
3	TEXTURED CEMENTITIOUS FINISH (COLOR: DARK GRAY) OVER CMU WALL
4	PINK/LIGHT TILE WOOD GRAIN FINISH (COLOR: CHERRY) OVER MASONRY
5	1/4"X1/4" HOPKINS COATED ALUMINUM QUADRANT SYSTEM PER CODE (COLOR: BRONZE)
6	POWDER COATED ALUMINUM FINIS (COLOR: DARK GRAY)
7	NOT USED
8	NOT USED
9	IMPACT RATED GLASS OVERHEAD GARAGE DOOR (FRAME COLOR: BRONZE)
10	IMPACT RATED SLIDING GLASS DOOR (FRAME COLOR: BRONZE)
11	IMPACT RATED SWING GLASS DOOR W/ SILLNETS (FRAME COLOR: BRONZE)
12	IMPACT RATED SWING GLASS DOOR (FRAME COLOR: BRONZE)
13	IMPACT RATED FIXED WINDOW (FRAME COLOR: BRONZE)
14	IMPACT RATED DOUBLE CASSETMENT WINDOW (FRAME COLOR: BRONZE)
15	IMPACT RATED FIXED WINDOW SYSTEM W/ CASSETMENT PANEL (FRAME COLOR: BRONZE)